

# Wakaflex Uni Outlet

## Fixing Instructions

The Wakaflex Uni Outlet is a lead-free, flexible, adhesive sealing collar for where flue pipes and soil stacks penetrate the roof, suitable for use with all concrete, clay tiles and slates.

Before applying the Wakaflex Uni Outlet please consider;

- *Minimum pitch 18° - Maximum pitch 45°*
- *Surfaces have to be dust, oil, fat free and dry*
- *Please ensure that the non-supported gap between the tiles and roof outlet is less than 50mm, if greater than 50mm additional support will be needed.*
- *Water sags and standing water must be avoided.*

### Tiles



1  
Decide in which course the Wakaflex Uni outlet is to be installed cutting the roofing membrane accordingly.



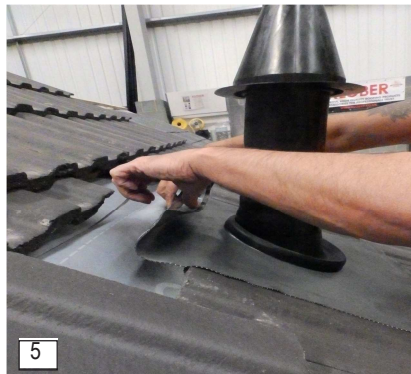
2  
Cut the tile around where the Uni outlet is to be installed for support, and cut the diameter of the outlet for the size required.



3  
Place the outlet sleeve over the outlet pipe, peeling back the film exposing the butylon adhesive strips.



4  
Once the film has been completely removed gently press the butylon strips so it adheres to the tiles..



5  
At the top of the Uni outlet fold over to create a welt for weather tightness and to prevent the entry of birds and insects.



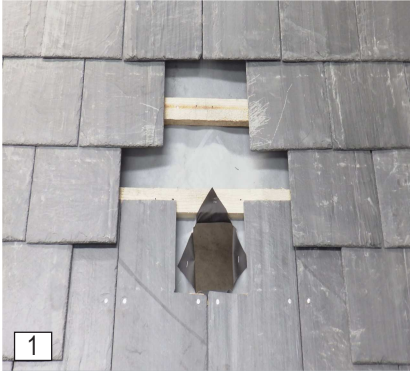
6  
Press down the rest of the Wakaflex uni outlet into the valleys of the tiles, no hammers or lead dresser is required as finger pressure is sufficient for this.



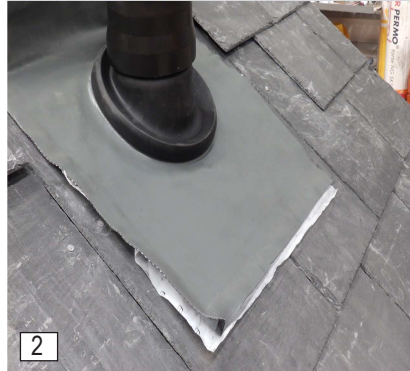
7  
Re fix the tiles in place to create a weather tight roof..

# Wakaflex Uni Outlet Fixing Instructions

## Slates



Remove the slates around where the pipe is to be installed cutting the membrane as above. Trim the slates to make the opening for the pipe



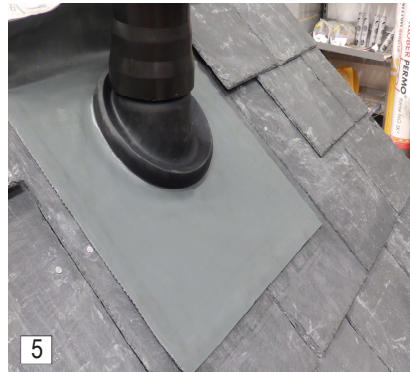
Cut the size of the diameter of the outlet to the size required, place the Uni outlet/pipe in position.



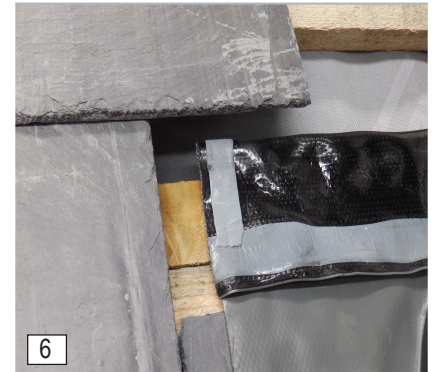
Peel back the film on the back of the Uni outlet exposing the butyl strips..



Press the Wakaflex Uni outlet onto the slates so the butyl strips adhere, finger pressure is sufficient for this.



The Wakaflex outlet should now fully adhere to the slates.



At the top of the Uni outlet fold over to create a welt for weather tightness, additional batten may need to be installed to support the outlet..



Fix the slates either side of the outlet so the slates overlap the flashing by the correct amount.



Finish fixing the slates around the Wakaflex Uni outlet cutting where necessary to create a weather tight seal.

For all sales enquires/orders, call or fax our Dedicated Customer Service Hotline and you will automatically be connected to the internal sales representative dealing with your area.

**Tel: 0845 600 4427 Fax: +44 (0)1332 813 082**

[www.roof-flashing.info](http://www.roof-flashing.info)

Klober Ltd, Unit 6F, East Midlands Distribution Centre, Short Lane, Castle Donington, Derbyshire, DE74 2HA

**Tel:** +44 (0)845 600 4427 **Fax:** +44 (0)1332 813082 **Email:** [info@haus-profi.co.uk](mailto:info@haus-profi.co.uk)